

R Lewis
Nineveh Charitable Trust
Park Farm
Frittenden Road
Biddenden
Ashford
TN27 8LG

Holyhead Road
Kingswood
Wolverhampton
WV7 3AP

12th January 2019

Dear Mr. Lewis

Re: Update on our Forest School Developments January 2018-January 2019

We are pleased to be able to update Nineveh Charitable Trust on the positive outcomes of our work since we received your grant of £3000 on 21st January 2018. Last year was another successful year for the charity, with more than 6400 visitors enjoying residential stays, day visits, programmes and events - discovering nature and learning outdoors at the Kingswood Trust. During the last 12 months, we delivered 18 x 6-week Forest School Programmes (groups of up to 12 children), 24 additional Forest School Taster days (Groups of 30 children) and 54 Special School days (6-12 children). 1466 children benefitted from our Forest School Activities up to January 2019. We were able to deliver close to our target this year on Forest School with further grants from two Wolverhampton Rotary Clubs, our own event fundraising activities and grants from The ALA Green Charitable Trust and The MBILI Charitable Trust.

School and group leaders have become more aware of the benefits of a "Forest School Approach to learning", and how this impacts on people's health and wellbeing and are keen to provide safe, opportunities for children to access nature and to use the outdoors a real context for learning in all areas, but to also support the children's physical development and mental health. The impact of nature on people's lives has become a talking point for many in the last year and this, backed by research is encouraging educators and parents to make health choices that involve the great outdoors.

The Kingswood Trust continues to welcome and actively gather feedback to shape its services. Here is some data from formal evaluations from the last 12 months:

- 100% of practitioners said that Forest School provided so much more than indoor lessons.
- 94% said that the quality of learning opportunities was excellent.
- 100% of Teachers believed that the Forest School activities improved children's confidence and independence, and this supported their self-esteem.
- 85% said that they wanted to develop similar opportunities in school so that all children could benefit.
- 96% of parents agreed that their children benefitted from being in and learning through nature and 100% agreed that their children enjoyed the experiences.

One of our programmes involved 6 children aged 5-8 with visual impairments and 6 children acting as buddies to support them in the outdoor environment. These children attend Castlecroft Primary School in Wolverhampton. We received great feedback from the children and their teachers and the parents were happy that the children were given these opportunities, which without your support would not have been possible. These children have limited opportunities due to their disabilities and the programme was aimed at giving the children greater opportunities to investigate and improve their confidence in the woodland. Some feedback from the children:

"I was worried at first, but the activities were fun and I felt safe being outdoors with my friend" Shona

"I love forest school... got to know my way around and did things I'd never done before" Amy

"I found it hard making the camp, it was a challenge but I did it" Fay

"My favourite activity was whittling a stick and cooking on the fire...it was fab" Tasha

"We found our way around using the clues ...it was like a treasure hunt" James

Mr. Dimmock – The lead teacher from the school said that the children had really gelled as a group outdoors and the buddies who were supporting gained as much as the partially sighted children. He wrote *“This outdoors programme has provided an amazing opportunity for all the children to improve their communication skills and grow socially, tackling problems together, dealing with risk and challenges and learning about nature. There have been so many happy faces. Thank you to everyone for giving the children such valuable connections with nature. We will be talking about this for some time to come.”*



From January 2019 we aim to deliver Forest School activities at the same level as last year. In addition, we have started a new project “Woodland Foresters” which is specifically aimed at Forest School Groups aged 11-15 with young people from disadvantaged backgrounds and who live in the city. This has already been supported by several notable Trusts including: Eveson Trust, James Beattie Charitable Trust, Hobson Charity Ltd and “Awards for All”. We hope that will continue to support us in 2019, by releasing the second grant of £3000 towards our Forest School Work.

Yours faithfully

Rachel Wells

(Charity Manager)

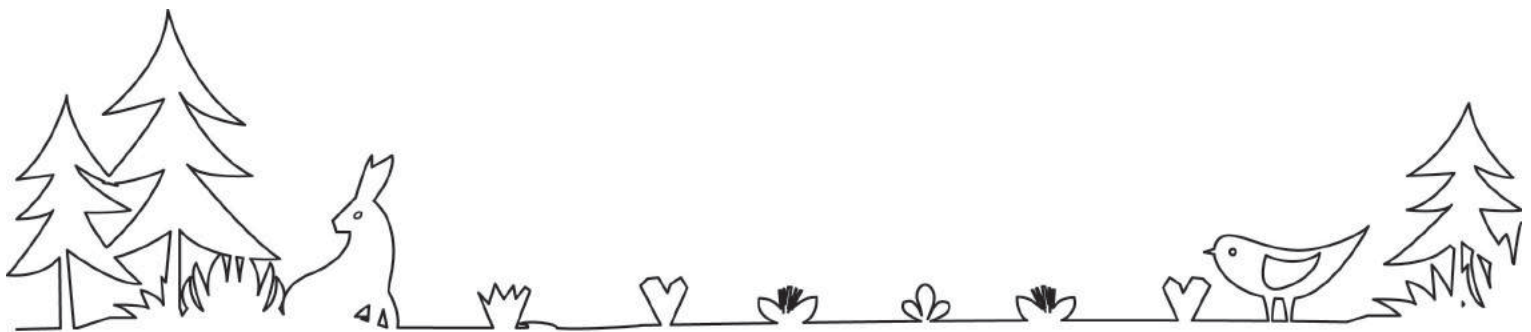
Telephone: 01902 558132 • Fax: 01902 558133 • Email: kingswood@wolverhampton.gov.uk

www.discover-kingswood.org.uk

Registered charity number - 1149688 KINGSWOOD TRUST

Company limited by guarantee - 8150065





Telephone: 01902 558132 • Fax: 01902 558133 • Email: kingswood@wolverhampton.gov.uk
www.discover-kingswood.org.uk

Registered charity number - 1149688 KINGSWOOD TRUST

Company limited by guarantee - 8150065