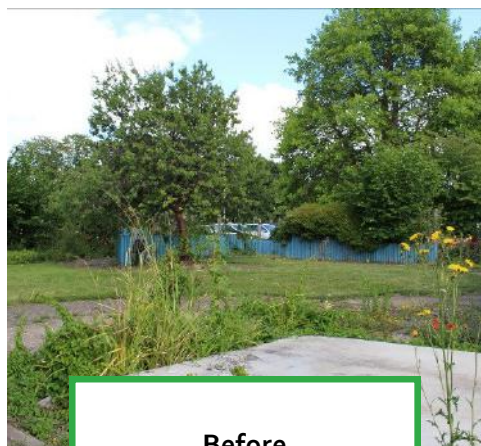
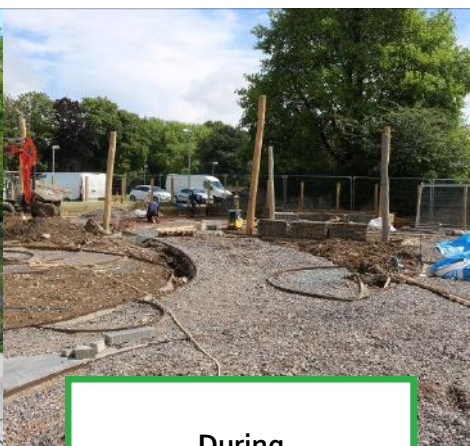


Outdoor Learning Centre Report - September 2021

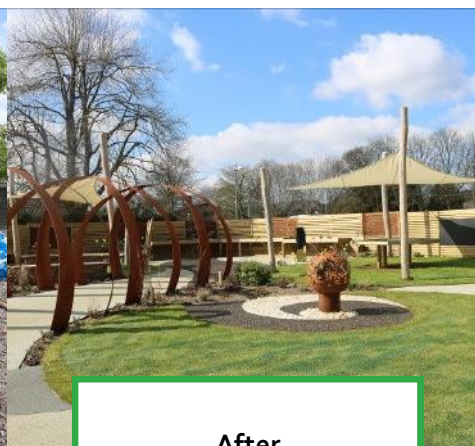
Treloar's
Enabling Education



Before



During



After

Refurbishment Complete Phase 1 of Treloar's Outdoor Learning Centre Open

We are delighted to say that despite some pandemic related delays, work on the Sensory Garden, the fully accessible changing facility and the Greenhouse refurbishment for Treloar's wonderful new Outdoor Learning Centre (OLC) are completed. Our students are enjoying using the fabulous new facilities, which are now far better suited to their very complex disabilities. Thank you so much to The Nineveh Charitable Trust for providing funding towards this incredible area for our students.

The Greenhouse has had a complete refurbishment so the temperature can now be better regulated to allow students to use it all year round and the doors are accessible through the use of a push button, enabling our students to be more independent. There is a home for small animals for learning about animal care and management. In the sensory garden there is a water feature, an activity table, a storytelling area, a firepit, raised beds, covered areas, beautiful featured archways and wheelchair friendly pathways to follow.



The covered walkway from College which is part of Phase 1 of the Centre is planned to be completed in 2022 when the construction of the new Classroom takes place. The plan is also to replace some of the glass panes within the Greenhouse after all the construction work has been completed.

The Centre has been in full use from the Spring 2021 term onwards and we were thrilled to welcome Treloar's Patron Alan Titchmarsh to formally open the area in June 2021. Over the page you can read some of our staff and students thoughts about the new Centre.



The students of M19 have been growing some vegetables from seed in the Outdoor Learning Centre over the summer.

Caroline, one of Treloar's Highly Specialist Occupational Therapists, has been teaching the students horticulture to help develop their hand coordination skills.

"The class has been growing seeds in the Outdoor Learning Centre for their Enterprise project. In a few weeks' time we will be harvesting and selling some of the vegetables at the Summer fete. We are hoping to use the money raised from this towards a trip for the students."

"Due to COVID-19 we haven't been able to go out or partake in our Community Skills projects for a while, so this is what we've been doing instead and it's quite a popular choice! As well as fun, gardening can be therapeutic and calming for our students and helps to enhance their health and wellbeing." **Caroline**

When asking **Connor (pictured top left)**, one of the students, if he was looking forward to eating the vegetables he said *"We're selling them for Enterprise, but we're also going to eat the rewards!"*



"It's amazing – it's so much better than it was. When it's raining I can stay outside under the canopy. I really like the garden now, the mirror is my favorite part. I'm looking forward to using the fire pit with my friends too." **Student Jade (pictured top right)**

Here's what some of our Teachers have to say about the new area:

"The Centre looks amazing and the space is just great. It really is an exciting area for outdoor learning and this is something we have been doing lots of at the moment. I'm really looking forward to growing things in the greenhouse with my class – last year we had a sunflower competition but this year we are planning a potato growing competition. The area is going to be so well used by all students." **Teacher**

"The new Outdoor Learning Centre will provide our learners with new and exciting opportunities to explore the outdoor world." **Teacher**

"Our most complex learners are now better able to engage with an increasing range of outdoor learning opportunities. Outdoor spaces are vital to help those who experience multi-sensory processing difficulties develop their senses and gain an understanding of their place in the world. The new OLC will help students to explore new sensations, experience the weather and engage in new tactile activities. Together this will not only enable a more holistic learning experience but will support overall health and wellbeing." **Teacher**



Emily and Chris love the shapes of the arched walkway



Chris is looking forward to sitting in the storytelling chair



Emily and Gee can't wait for the animals to arrive



Dylan loves the mirror and thinks it's hilarious how he looks in it



Amelia thinks this is a great pattern making arch



Connor loves being outside and really enjoys his time in the Centre



Students have been enjoying planting in the raised beds



The firepit is a firm favorite with students



Dan and his class have been busy in the greenhouse planting sunflowers



Outdoor Learning Area – 3 classes can use this space at any one time

Times	Monday	Tuesday	Wednesday	Thursday	Friday
Lesson One 9.00 to 9.45	Primary	College Entry Level /vocational	Sixth Form	College Sensory & Interactive	Key Stage 4
Lesson Two 9.45 to 10.30					
Break 10.30 to 11.15					
Lesson Three 11.15 to 12.00	Key Stage 3	College Sensory & Interactive x2	Key Stage 3	College Entry Level	Vocational
Lesson Four 12.00 to 12.45					
Lunch 12.45 to 14.00					
Lesson Five 14.00 to 14.45	Key stage 4	Sixth Form	College Entry Level	Primary	Bookable
Lesson Six 14.45 to 15.30					College bookable
Break 15.30 to 16.15					
Lesson Seven PPD 16.00 to 17.00	Bookable for Residential Houses & PPD sessions	Bookable for Residential Houses & PPD sessions	Bookable for Residential Houses & PPD sessions	Bookable for Residential Houses & PPD sessions	Social Time

Space bookable for residential houses only from 5pm

Curriculum Learning

Our Teachers have devised a timetable for the area so that it can be used by all School and College groups. It is great that the area can accommodate up to three groups at a time, meaning the maximum amount of students can benefit each day. It is also being used during the evenings for social time and at the weekends for the termly boarders and those students who are on a 52 week provision.

Phase Two

We have been continuing our fundraising efforts towards Phase 2, which includes the classroom extension and a second accessible changing facility, we are thrilled to say that we have secured £277,763 of the amount required. Our aim is to raise the remaining £64,027 over the next six months with the expectation of work starting mid 2022. Given the configuration of the site, the Greenhouse and Sensory Garden will also be able to remain open as much as possible during the building work.

Longer Term Plans

Due to the pandemic we have had to restrict visitors to our site and so sadly our longer terms plans for a shop and garden centre have had to be put on hold. That said, we are looking at ways in which we can create a pop-up café and regular plant/produce sales once the Centre is more up and running in terms of growing things. We also outlined in our initial proposal to open up the Centre to community groups and other schools—this is something that we are still aspiring to do once the situation with the pandemic has settled down and it is safe to do so.

On behalf of all at Treloar's, thank you for your support and generosity

We very much hope you have enjoyed reading this report and learning more about how The Nineveh Charitable Trust donation has benefited our truly inspirational students. We are pleased to be welcoming external visitors to our site once again so do please let me know if you would like to arrange a visit to see first-hand the positive impact of your donation.

If I can help in anyway or you wish to contact me I can be reached on Lucinda.gillingham@treloar.org.uk or **01420 547 464**.

Lucinda Gillingham, Head of Trusts, Corporates & Liveries

Treloar Trust, Holybourne, Alton, Hampshire, GU34 4GL