



RIVER HOLME
CONNECTIONS



Nineveh: Wildlife Monitoring Project

May 2021 – February 2022



Fig. 1 Picture showcasing wildlife found at BioBlitz events.

Project Summary

The Wildlife Monitoring Project was presented to local Holme Valley community with intention to span approximately 10 months and was broken down into two main activities the public could engage with:

- 1) BioBlitz Events
- 2) Wildlife Camera Trap Monitoring.

Project Aims/Success Indicators

- 1) A thorough and complete data record of wildlife video files covering the River Holme catchment, with corresponding GPS points recorded and inputted into the River Holme Connections GIS database.
- 2) A survey to identify improvements in mental health and wellbeing of volunteers involved in the project.

Activity 1: BioBlitz Events

BioBlitz Summary: Engage with the Holme Valley Community to monitor wildlife abundance and diversity for specific sites.

Funding was used for promotion and subsidy of BioBlitz events at 2 different sites during spring and summer: Magdale (29/05/2021) and Honley Old Wood (11/08/2021). Promotion details for Honley Old Wood can be seen in appendix.1.

What did BioBlitz events offer?

- Engagement with a wide demographic range of 6- 70 years old local people.
- Multiple stands set up with corresponding wildlife experts/organisation representatives for people to interact with and potentially sign up as members (Fig.2).
- Guided walks with Species Experts – Badger, Butterfly, Reptile, etc.
- The vital opportunity for children, family, and public to make a positive connection with nature in their local area.
- Positive impact on mental health for volunteers and public.

Key attendee statistics for the events can be seen in Fig. 4.



Fig. 2 Picture showing wildlife stands at Honley Old Wood BioBlitz.



Fig. 3 Picture showing Smooth Newt (*Lissotriton vulgaris*) Found at Honley Old

Fig. 4 Table showing attendee statistics for BioBlitz events.

	BioBlitz Location			
	Magdale (29/05/21)		Honley Old Wood (11/08/21)	
Attendees	No. Attendees	Total Hours	No. Attendees	Total Hours
General Public	30	60	37	74
Wildlife Experts	6	27	8	28.5

Activity 2: Wildlife Camera Trap Monitoring

Summary: Funding was used to purchase 2 Wildlife Trail Camera's (Browning Command Ops Elite) and 2 GoPro Hero 7's. Both with the intention to be deployed by trained volunteers to capture local species (Aquatic and Terrestrial) for social media, and biodiversity records, and GIS mapping (Geographical Information Systems).

Volunteer Training:

River Holme Connections staff ran 1-1 training sessions at the local river tributary (Mag Brook), allowing familiarisation of camera trap controls/settings as well as how to effectively set up the camera traps in the field.

Monitoring equipment was lent on a 1-month rotary basis. The volunteers came from Lockwood (North Catchment) to The River Ribble (South Catchment) providing a full spatial range of wildlife data throughout our area.

What was Captured on Camera?

- One volunteer was particularly successful when using the GoPro – capturing underwater video footage of a local Brown trout, met with great response when posted on all our social media.
- Wildlife Monitoring Captured Species List: Roe Deer, Badger, Heron/Various bird species, Crayfish, Trout (Fig. 5).

Key Statistics:

Total Volunteering Hours: 90.5



Fig.5 Pictures of Holme valley wildlife captured by Camera Traps and GoPro's.

GIS mapping

Camera Trap and GoPro footage provided 12 new geotag files to be added to the River Holme Connections GIS Map, showing the distribution of species throughout the catchment (Fig.6).

Geotag feature: Addition of location information to media files (Photos/Videos) allowing them to be displayed as geospatial data.

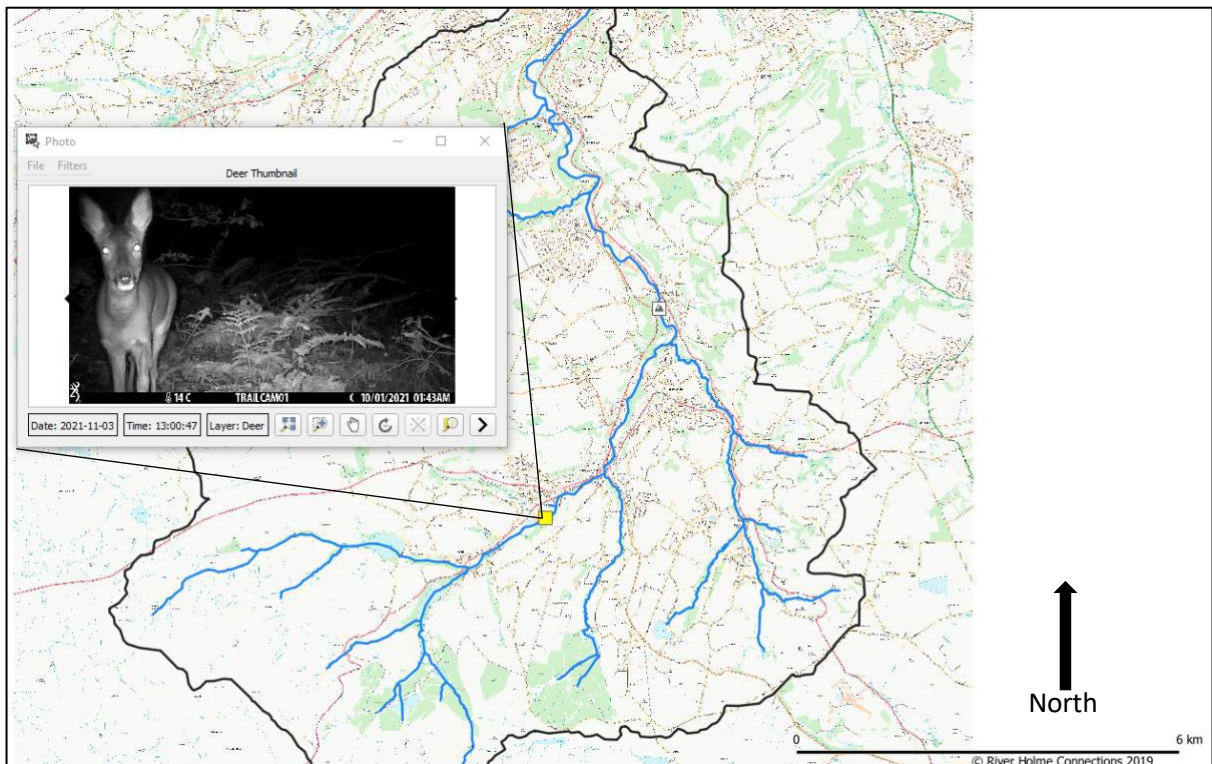


Fig. 6 Picture showing geotagged Roe Deer footage in context of River Holme Catchment.

Benefit to Mental Health

The survey below (Fig. 7) was sent out to the volunteers who participated in Wildlife Camera Trap Project. The Graph below (Fig. 8) is a clear indicator that the wildlife monitoring project had positive effect on mental health, considering that 100% of volunteers felt the project had increased their skills and 80% felt an increase in happiness/wellbeing.

Has the Wildlife Monitoring Project had any of these effects on you?

- 1) Increase my knowledge about wildlife: yes/no
- 2) Increase my skills: yes/no
- 3) Make me feel less isolated: yes/no
- 4) Make me happier/increase my wellbeing: yes/no
- 5) Increase my feeling of being part of the community: yes/no:

Fig. 7 Questionnaire regarding the mental health effects of the wildlife monitoring project for volunteers.

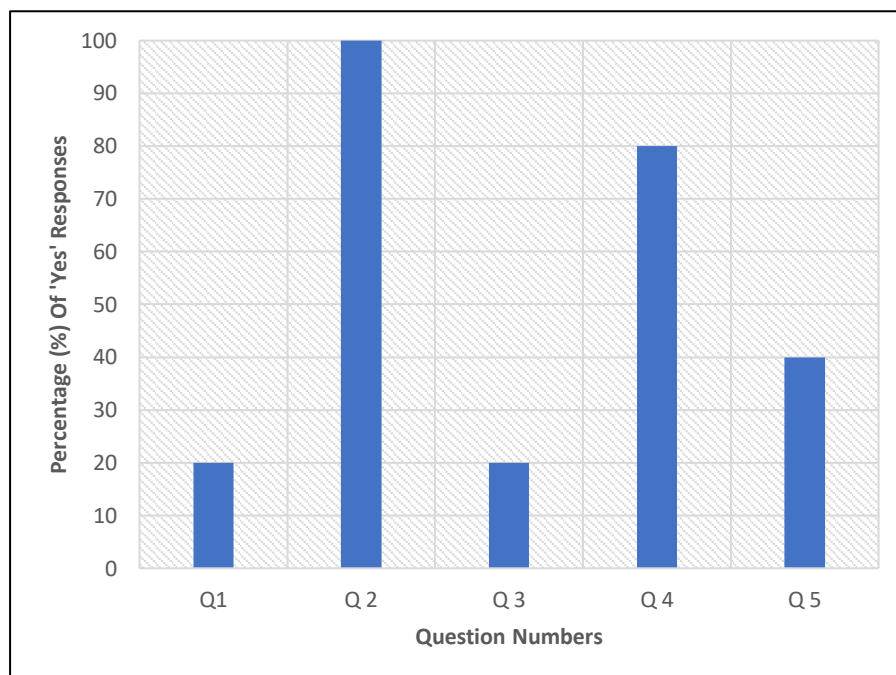


Fig. 8 Bar chart showing response of volunteers to Fig. 5 questionnaire.

Summary of Hours:

Total Hours Target (THT): 880

Activity	Hours
BioBlitz Events (1&2)	189.5
Wildlife Camera Trapping (& Associated activities)	90.5
GIS mapping	7.5
Total Hours	287.5

We expect to reach the THT through continuation of the wildlife Monitoring project throughout coming years via ongoing wildlife monitoring with camera traps and GoPros with a new volunteer rota each season.

Summary of Expenditure:

Remaining volunteer expenses at the end of the project were used to purchase bat detectors as well as additional wildlife ID guides to be used by volunteers/general public in future continuation of the wildlife monitoring project (see Appendix.2 for full expenditure details).

Total Income	£2788.00
Total Expenditure	£2788.00
Remaining Spend	£0

Appendix:

Appendix. 1 Honley Old Wood BioBlitz Promotion Poster

BIOBLITZ

Honley Old Wood – 11th August

Join Friends of Honley Old Wood,
Kirklees Council and River Holme Connections

for a bountiful BioBlitz at Honley Old Wood!

Find us along Meltham Road up from Meltham Mills, not far from
Valley of Bowmen (Archery Club), nearest post code HD9 4HX

Schedule of the Day:
Morning Session
10am - 12 noon:
Afternoon Session
12:30pm - 2:00pm: Afternoon Session

The aim of a BioBlitz is to identify as many animals and plants as possible at the Honley Old Wood site. We will have ID experts joining us from local wildlife groups to help you identify the animals and plants you find, and act as fountains of knowledge for all your questions! We will be finding and identifying insects, wildflowers, birds, amphibians and much more, but we need all the help we can get! See you there!

Please wear shoes that you don't mind getting dirty!

Nineveh Trust

	Actual	Ringfenced	Remaining spend
Income	£2,788.00		
Plus Gift Aid			
Expenditure	£2,788.00		£0.00

INCOME

3/8/2021

£2,788.00

EXPENDITURE

			Quoted	Actual
staff time	desktop study to identify potential monitoring sites	2 days @£45 per day (year in industry student)	90	90
	communicate with landowners to gain permission	2 days @ £45 per day (year in industry student)	90	90
	Comms - advertise on social media, blogs, website updates	2 days @ £45 per day (year in industry student)	90	90
	travel expenses (to monitoring sites)		200	200
	GIS - mapping of sightings	2 days @ £45 per day (year in industry student)	90	90

	buying equipment (cameras, ID guides)	1 day @ £45 per day (year in industry student)	45	45
	booking BioBlitz venue	1 day @ £45 per day (year in industry student)	45	45
	RHC staff at BioBlitz, and project support	2 days @ £250 per day (RHC staff)	500	500
	mental health and wellbeing survey (produce and carry out at BioBlitz)	2 days @ £45 per day (year in industry student)	90	90
volunteer time	BioBlitz sessions of wildlife hotspots (incorporate with citizen science)	2 days	0	0
volunteer coordination	camera trap and underwater camera training	1 day @ £45 per day (year in industry student)	45	45
	volunteer coordination and volunteer support	7 days @ £45 per day (year in industry student)	315	315
	river species ID training (fish, invertebrates, birds, mammals)	1 day @ £45 per day (year in industry student)	45	45
resources	camera equipment (see table below)		738.49	
	Camera			237.99
	Camera			142
	Camera			160
	Camera equipment			48.96

	Camera equipment			46.48
	Camera equipment			46.18
	Bug pots			14.99
	ID guides (land mammals, FW fish, wetland birds)		15.22	15.2
	Bat detectors		unspent vol expenses	312.49
	sourcing BioBlitz equipment and experts from local groups (small mammal footprint tunnels, bat detectors, moth traps, binoculars, newt traps) (Jane share contacts)	2 days @ £45 per day (year in industry student)	90	90
Volunteer expenses	volunteer refreshments, travel expenses, PPE	2 days	300	spent on bat detectors
		Total	2,788.71	2,759.29
		Remaining spend		28.71
		YII staff time		-28.71
		Total		2,788.00