



F.A.O. Sally Hutchinson & Trustees
8, Mill Lane
Saffron Walden
Essex CB10 2AS

9th January 2022

Dear Nineveh Charitable Trust

Report on Fox's Field forest garden project

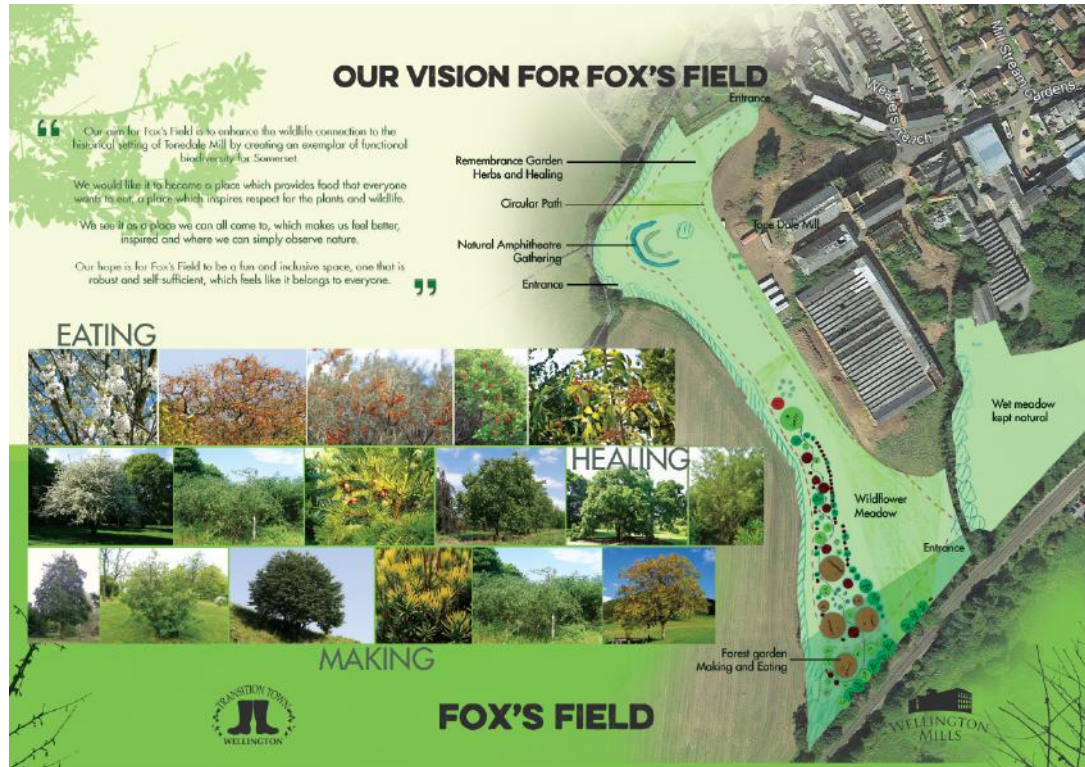
I am writing to express our heartfelt thanks for the grant of £2,500 awarded by the Nineveh Charitable Trust in February 2020 towards our forest garden project. Without this financial support we would not have been able to progress with this ambitious, community-led project and we're delighted how things have developed over the past year.

The bulk of the grant has gone towards the purchase of plants from the Agroforestry Research Trust in Totnes, with the remainder to pay for the mowing and baling of the grass preparatory to planting.

In May-June 2020, five members of the Transition Town Wellington team took a six-week intensive course on forest garden design run by a London-based organisation called Roots n Permaculture. Using the skills they learned, they spent the next several months working on and refining a design that would work for Fox's Field. This resulted in a very detailed planting plan and a list of trees and bushes, each variety selected for a specific reason: for their fruit or nuts, their benefits to pollinators, their role as nitrogen/nutrient fixers, for their resilience, and for their suitability for this particular soil, sun/shade pattern and climate.

The thinking behind the forest garden design was informed by the two public consultations (online) held in January and March 2020. The third and final public meeting was a presentation of the ideas by the team, at an outdoor venue at Tone Dale House in August 2020. The presentation took the form of six large information boards describing the analysis of the site, the feedback from the public, the current situation re biodiversity and the vision for the future.

One of the information boards for the 3rd public consultation:



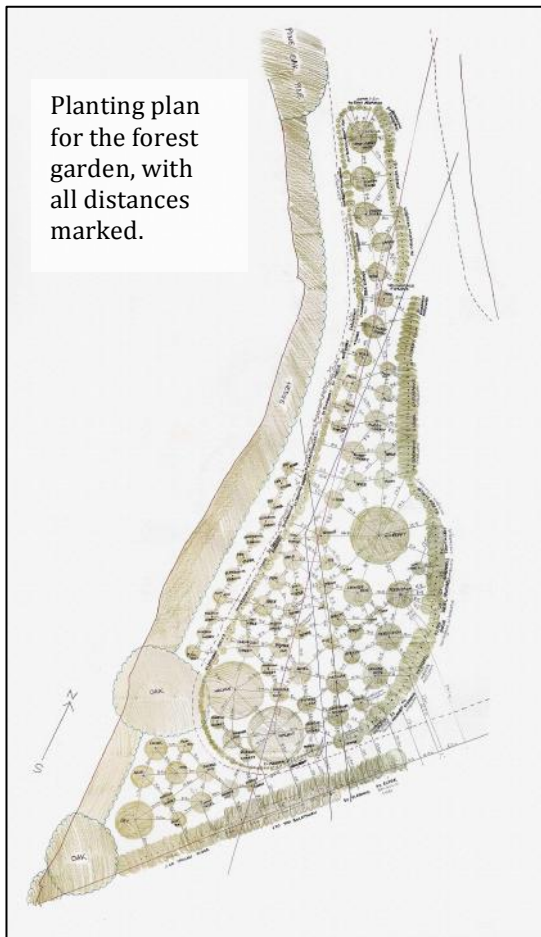
Shots from the 3rd community consultation day, August 2020



(L) Helen Gillingham with planting plan, measuring out the location of each tree and bush.
(R) sign for the food hedge or 'fedge' that marks the edge of the forest garden



Some of the volunteers who turned out for the 1st of 4 community planting days. Dec 4th 2020



Planting plan for the forest garden, with all distances marked.



One of several articles on the project in the local newspaper, Wellington Weekly News.

The grant from Nineveh has been spent as follows:

£1,916 on plants from the Agroforestry Research Trust, Totnes.

The remaining £584 will go towards the cost of mowing, turning and bailing the grass done in September 2020 by contractor Robert Cross. The total cost of this is likely to be over £600, but we are still awaiting the invoice with exact amount.

I trust that this report is sufficient for your purposes, but if you require any other information or documentation, please do not hesitate to contact me at anita.roy@wellingtonmills.org

Our grateful thanks, once again, to Nineveh Charitable Trust for their generous support in getting this exciting project off to a flying start!

With best wishes for the new year and beyond from all of us at Wellington Mills Community Interest Company.

Anita Roy
Director
(m) 07444188435